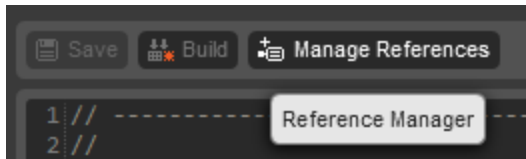
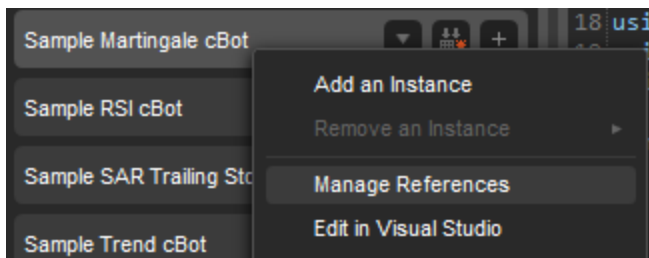


Referencing a dll

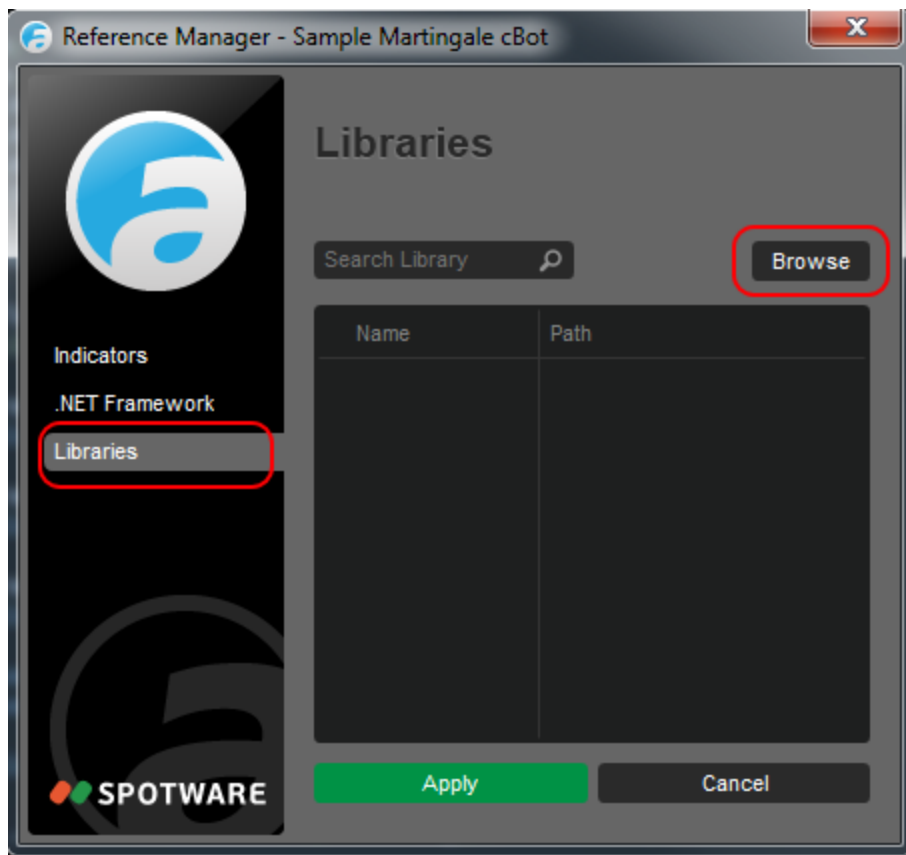
cAlgo allows users to reference .NET libraries from cBots and Custom Indicators. In order to add a reference to .NET library you need to open Reference Manager window. You can open Reference Manager window by clicking “Manage References” button in the top of cAlgo editor or by execution “Manage References” command from context menu of your cBot or Custom Indicator.



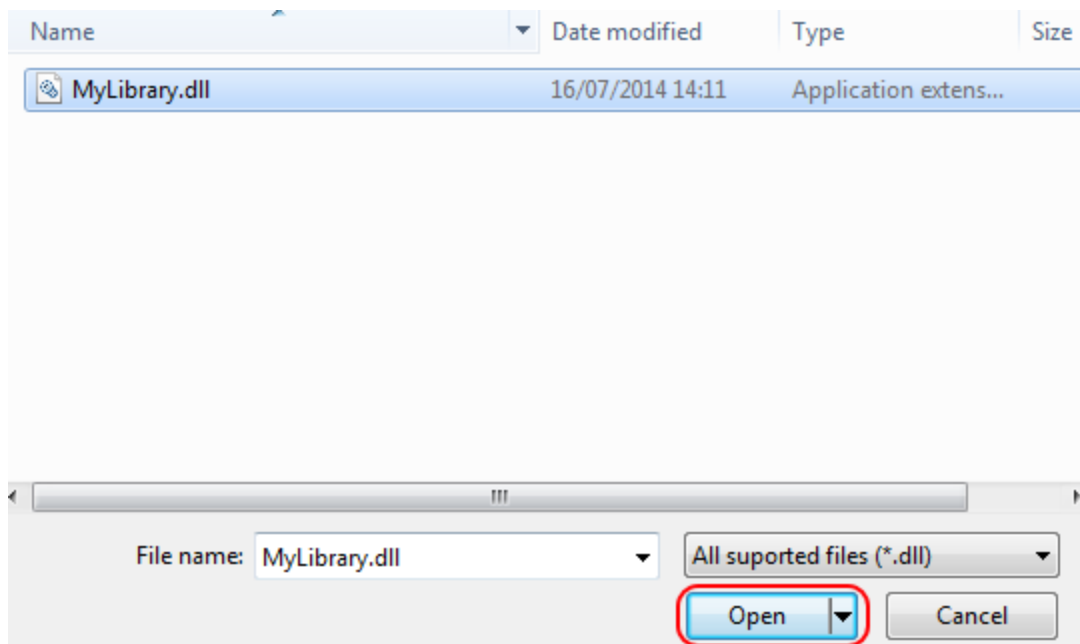
OR



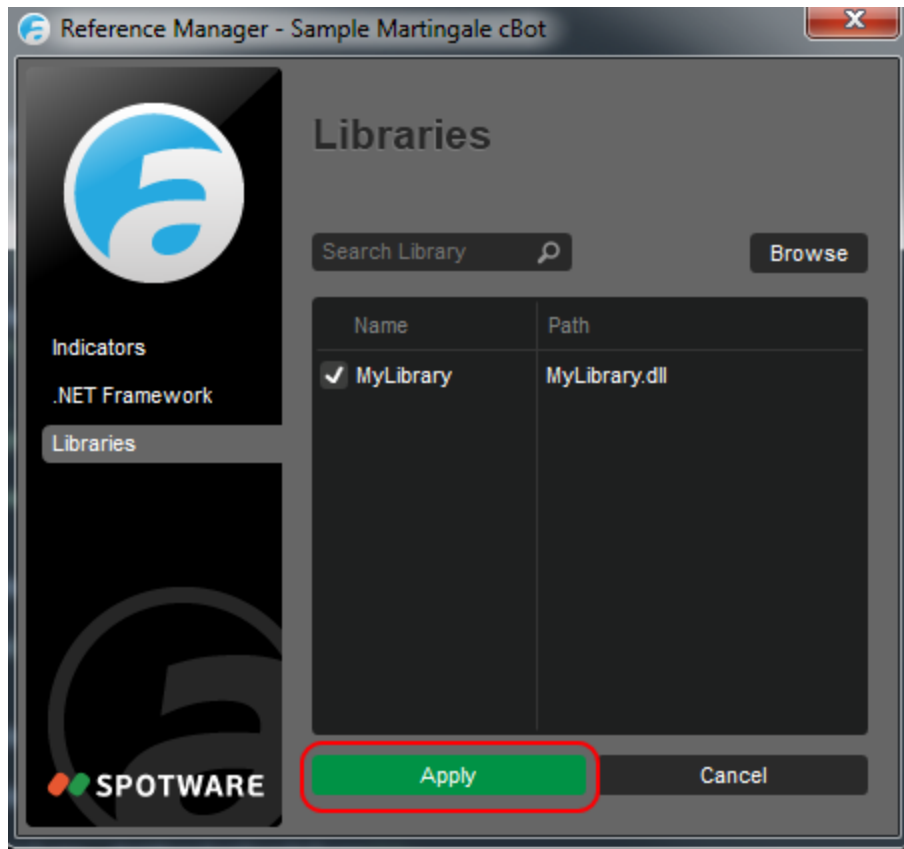
In Reference Manager open Libraries page and click on the Browse button:



In open file dialog you need to select a .NET dll and click on the Open button.



Click on the Apply button in Reference Manager to apply the changes.



Then you need to import namespaces from the Library. Example:

```
14
15 using System;
16 using System.Linq;
17 using cAlgo.API;
18 using cAlgo.API.Indicators;
19 using cAlgo.API.Internals;
20 using cAlgo.Indicators;
21 using MyLibrary.Mynamespace;
22
23 namespace cAlgo
24 {
```

Finally, you can use classes from the Library in your code:

```
protected override void OnStart()
{
    var instance = new ClassFromDll();
    instance.SomeMethod();
}
```